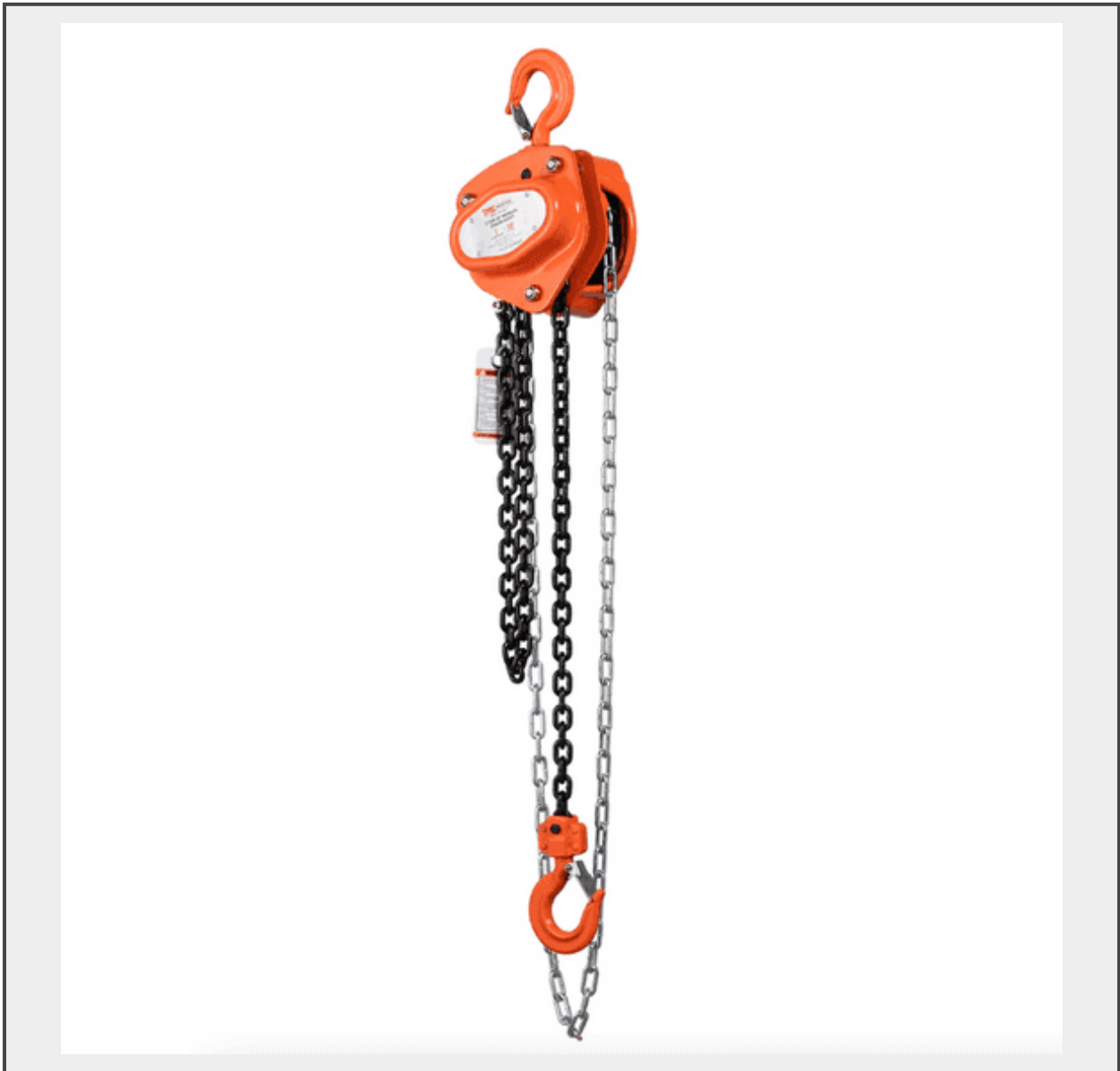


Sale Name: GREENWOOD, BC-JUNE 15th, 2024

LOT 152 - TMG Industrial 1 Ton 10' Chain Hoist-Unused



Description

Features

- Excellent device to help you lift and/or suspend objects overhead for applications like machine maintenance and parts removal/replacement
- Maximum loading capacity of 2200 lb to be used in environments such as warehouses, factories, boatyards, docks and machine shops
- Designed with double pawls and double guide rollers that serve to enhance this hoist's safety, reliability and performance output
- Stamping safety latch is attached to a 360° swivel hook allowing you to maneuver objects while they're suspended; maximum lifting height of 10'
- All-steel construction and impact resistant covers are amplified by a powder coated finish allowing this hoist to thrive even in severe, exposed environment
- Style/power source: Manual gear
- Loaded capacity: 2200 lb (1 ton)

- Lift height: 10'
- Required headroom: 12'-½"
- Load chain fall number: 1
- Load chain diameter: 6 mm
- (2) Casting guide wheels
- Grade 80 load chain made for industrial loading
- 2.5 times safety factor end anchor
- Curled edge
- Roller bearing
- Certification: ASME B30.16 & HST-2, approved by CE, GS certificatio
- This product is packed in a carton shipping box
- Shipping dimension: 10" x 8" x 7" (L x W x H)
- Shipping weight: 25 lb

Product Description

The TMG-AHC1 Manual Chain Hoist is the perfect assistance device to help you lift and/or suspend items overhead for applications such as machine maintenance, equipment lifting/lowering, parts removal/replacement and more. This chain hoist has a loading capacity of up to 1 ton (2200 lb) making it extremely versatile and adaptable to most warehouse, factory and machine shop environments.

Designed with double pawls and double guide rollers that serve to enhance the safety, reliability and performance of this hoist. It has a maximum lifting height of 10' and is equipped with a heavy-duty, high-strength chain to handle your toughest jobs.

The stamping safety latch is attached to a 360° swivel hook so you can maneuver objects while they're suspended. An all-steel construction and impact resistant covers are amplified by a powder coated finish, making this hoist built to last even in severe, exposed outdoor environments.

TMG Industrial 1 Ton 10' Lift Chain Hoist, 360° Swivel Hook, ASME B30.16, TMG-AHC1

Lots 151 and 152 are grouped together. Timed grouping of lots allows similar lots to be bundled together and sold. This gives interested buyers the option to bid on one lot or multiple lots within the group with all lots remaining open until bidding ends for the group. Each lot can be sold at a different price and/or to a different buyer.

Quantity: 1



<https://bid.southerninteriorauctions.ca/>