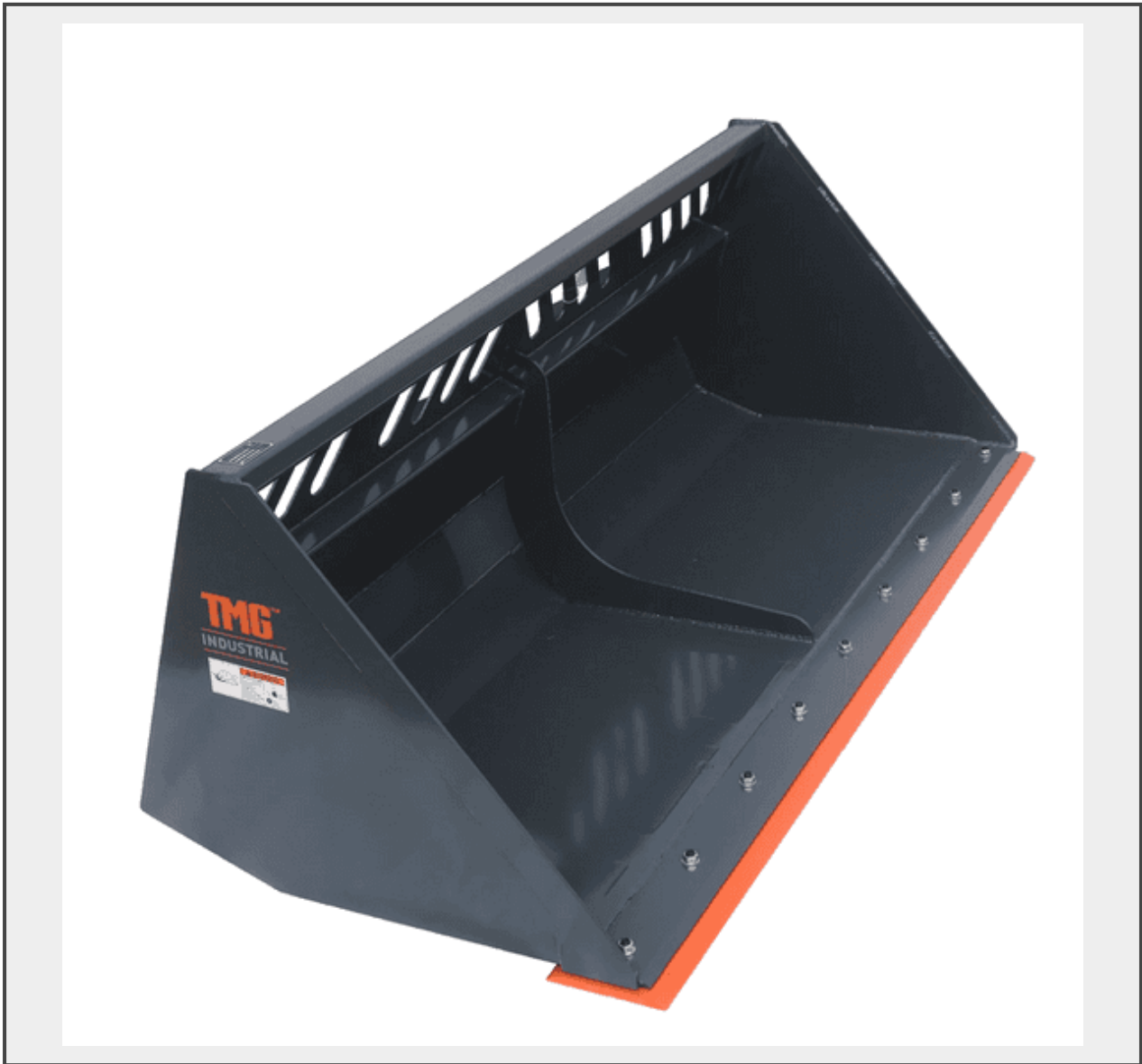


Sale Name: CRANBROOK, BC-SEPTEMBER 4th, 2024

LOT 146 - TMG Industrial 84" Skid Steer Bucket-Unused



Description

Features

- Excellent all-year-round skid steer attachment for snow removal and transporting lighter materials like mulch, wood chips and soil
- Overall heavy-duty construction gives this bucket a 1500 lb weight capacity that is built to last and will stand up to your toughest jobs
- 84" of working width makes quick work of clearing snow in large areas or transporting bigger quantities of light material around a yard, jobsite or property
- Bolt-on, high tensile steel cutting edge is resistant to wear and ensures a clean, professional finish when scraping snow off of pavement
- Reinforced ribs have been added to the bottom and inside of the bucket to increase strength, durability and performance over time
- 37" bucket depth and high side walls not only give you a large carrying capacity but also acts as a natural leveler for any materials you might be carrying

- Universal quick mount allows for the easy changing of attachments and makes this bucket compatible with most skid steer makes and model

Specifications

- Volume capacity: 1 cu-yd
- Weight capacity: 1500 lb
- Working width: 84"
- Bucket depth: 37"
- Cutting edge: 8" x 5/8"
- High tensile steel construction
- Bolt-on cutting edge
- Universal skid steer mount
- Shipping weight: 880 lb

Product Description

The TMG-SN84 Skid Steer Snow/Mulch Bucket is an excellent all-year-round attachment for moving snow, mulch, wood chippings and other light materials around your home, farm or commercial property. Reinforced, heavy-duty steel construction ensures long lasting, dependable use for any high-volume operation such as a snow removal/landscaping company or garden supplier.

A bolt-on, high tensile steel cutting edge is resistant to wear and will make sure you scrape snow right down to the pavement for a clean, professional finish that you and your customers will be proud of. Handy attachment to have around the yard for moving materials or discharging your wood chipper into. Ribs have been engineered right into the inside and bottom of the bucket for increased strength, creating an attachment that is built tough and made to last.

Cut-outs on the back of the bucket help increase operator visibility, and the high walls not only increase loading capacity but act as a natural leveler for any materials you might be carrying. The 84" working width makes quick work of large areas if used for clean up or parking lot snow removal, and the 1500 lb weight capacity will handle all your biggest jobs with ease.

**TMG Industrial Heavy-Duty 84" Skid Steer Snow/Mulch Bucket, Bolt-On
Cut Edge, 1500-lb Weight Capacity, Universal Quick Mount, TMG-SN84**

Quantity: 1



<https://bid.southerninteriorauctions.ca/>