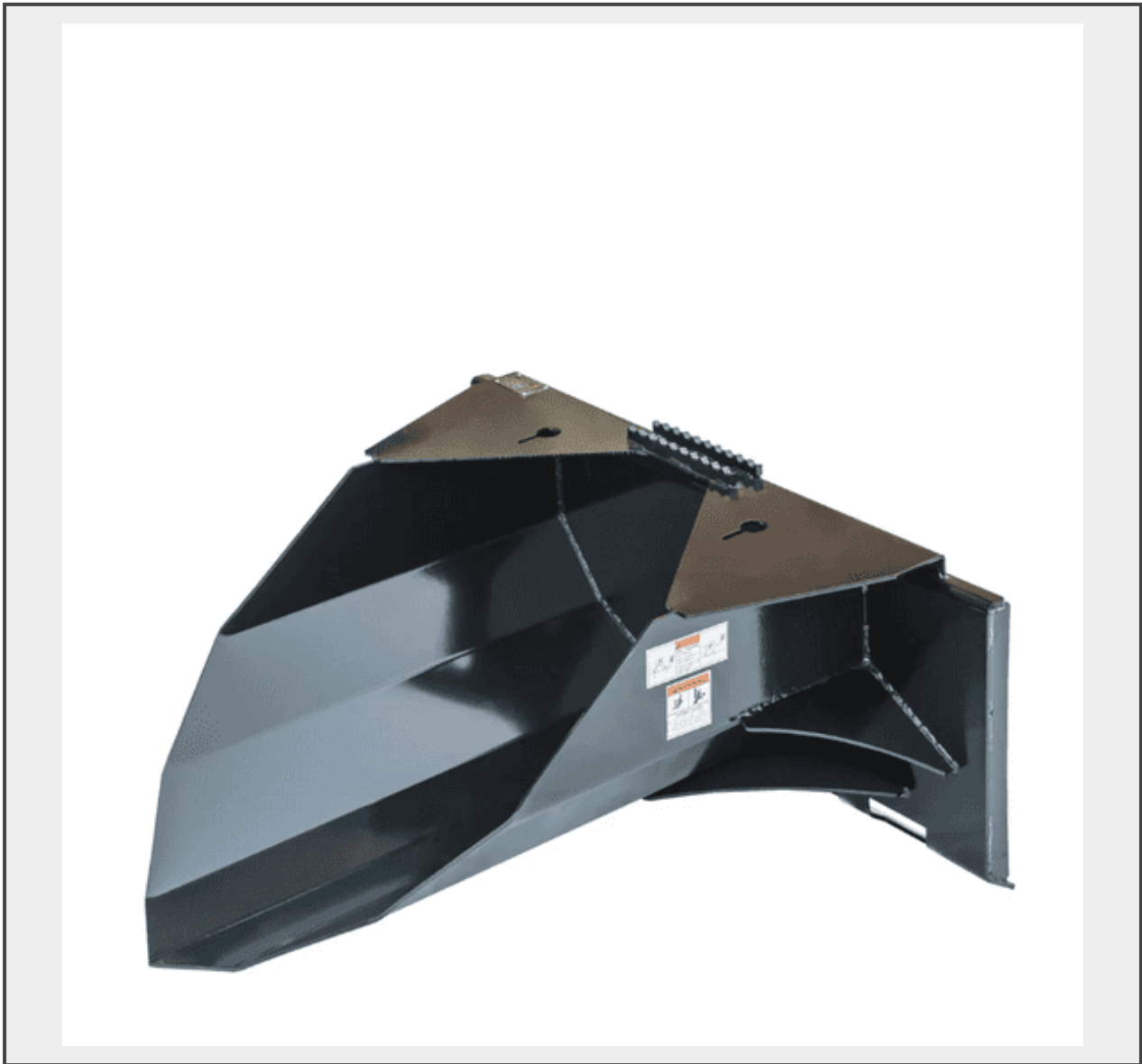


Sale Name: CRANBROOK, BC-SEPTEMBER 4th, 2024

LOT 207 - TMG Industrial 42" Tree Scoop-Unused



Description

- Excellent addition to the inventory of any nursery or landscaping business for the removal and/or transport of stumps, trees and shrubs
- 42" blade length can easily slice through tough grounds and reaches to cradle the undergrowth of trees so they can become established in a new area
- Heavily gusseted blade frame has been reinforced for maximum strength and durability while digging into established root systems
- Save time, money and labour on your orchard or vineyard by eliminating exhausting work with the convenience of this tree scoop
- Chain slot tie-downs have been engineered into the top of the scoop you can easily secure loads during transport, mitigating the risk of damage to live trees
- This is a multi-use attachment that can also be used for the excavation, removal and transport of embedded stones around your property
- Universal quick attach mount is compatible with most skid steer models and minimizes downtime between tasks that require separate attachments
 - Compatible with 30 to 70 HP skid steers

- Scoop weight capacity: 1500 lb
- Blade length: 42"
- Mouth opening: 30"
- Blade steel thickness: 8 GA
- Cut edge: NM400 high abrasive
- Chain slot tie-downs
- Universal quick attach skid steer mount
-
- This product is packed in a metal crate shipping box
- Shipping dimension: 51" x 44" x 23" (L x W x H)
- Shipping weight: 295 lb

**TMG Industrial 42" Heavy-Duty Skid Steer Tree Scoop, 1500-lb Capacity,
Chain Slot, 30" Mouth Opening, High Abrasive Cut Edge, TMG-TS42**

Quantity: 1



<https://bid.southerninteriorauctions.ca/>