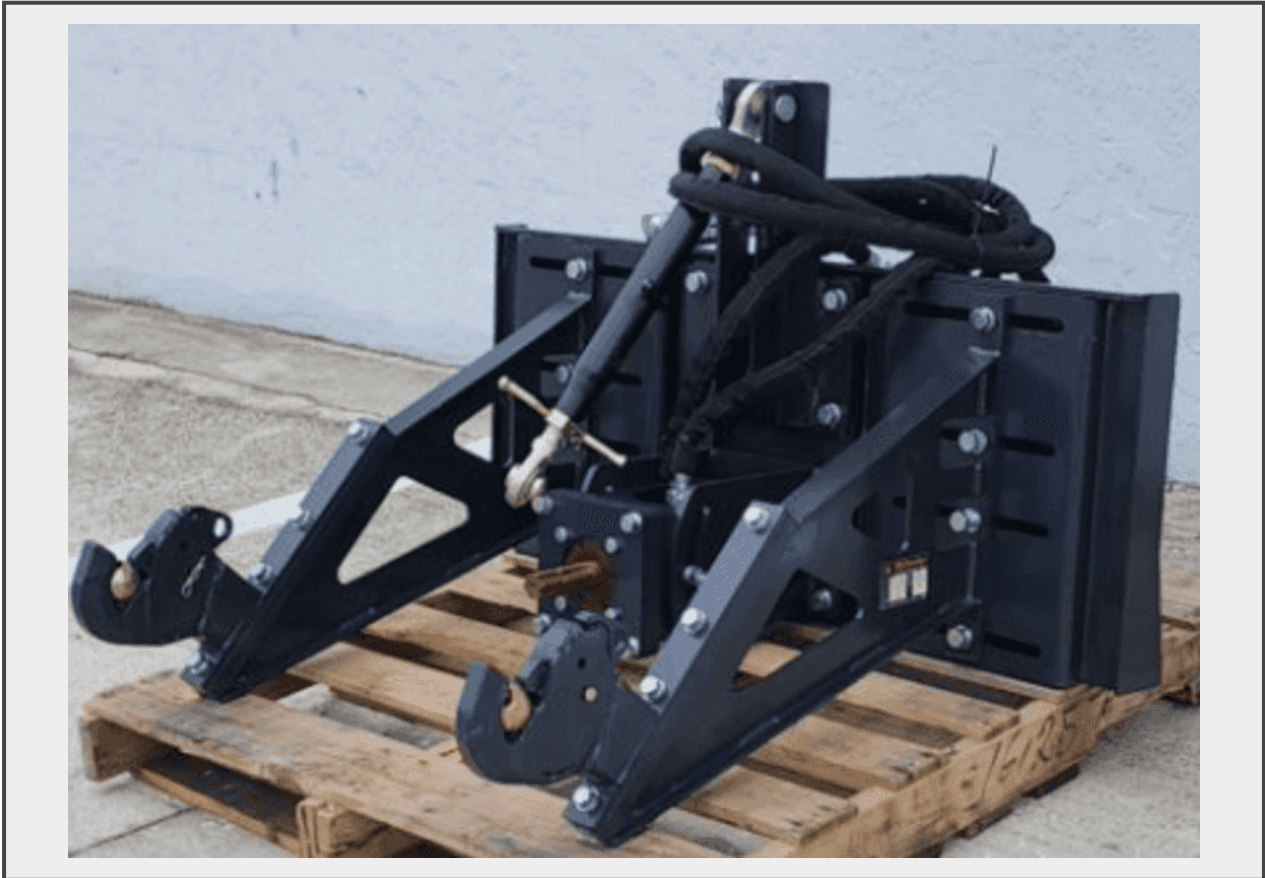


**Sale Name:** GREENWOOD, BC-OCTOBER 19th, 2024

**LOT 233 - 2024 Wolverine 3 Point Hitch PTO Adapter Hydraulic SS Attachment-  
Unused**



**Description**

Unused Wolverine 3 point hitch PTO adapter hydraulic SS attachment, hydraulic flow range required: 15-20 gpm., power: 20-34hp, 3 point hitch mount type class II, motor speed ups to 560r/min., power 25kw, model PHA-15-02C, approx. weight 199 kgs

**Lots 232-233 are grouped together. Timed grouping of lots allows similar lots to be bundled together and sold. This gives interested buyers the option to bid on one lot or multiple lots within the group with all lots remaining open until bidding ends for the group. Each lot can be sold at a different price and/or to a different buyer.**

**Quantity: 1**



<https://bid.southerninteriorauctions.ca/>